



Installation Instructions for K10470
A/C Bracket for LS engines with Corvette balancer

Kit contents:

- Mounting plates
- Spacer tubes
- Fasteners
- Idler pulley
- Tensioner

Additional parts required:

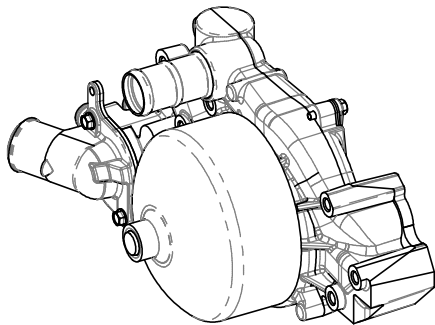
- Belt. See chart below.
- AC compressor, Sanden "508" style. Typical SD5 Sanden part number is 6629. However, we recommend the SD7 Sanden part number 4665 for smoother operation and less vibration.

Belt length and Gates PN - K10470 AC bracket - Corvette spacing				
Factory GM Alt/PS bracket and pulley	Kwik Performance Alt/PS bracket K10166			Kwik Performance alternator only bracket K10192
	6.7" diameter power steering pulley	6.0" diameter power steering pulley	5.5" diameter power steering pulley	
100.25" K060997	99" K060984	98.13" K060975	98.13" K060975	92.13" K060915

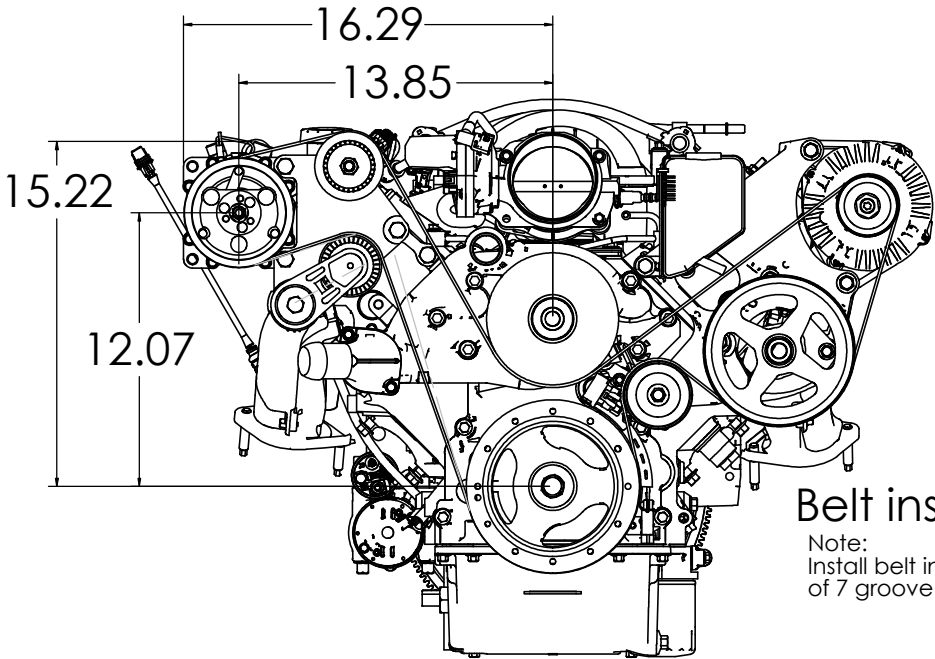
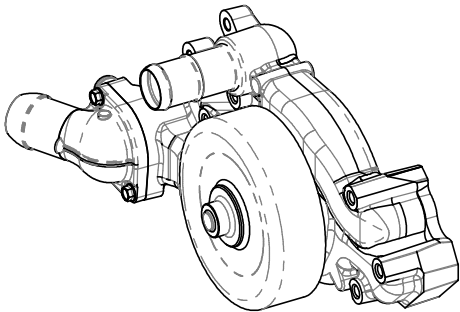
Water pump identification

Needed for Step 2.

LS1 and LS6 water pump:



LS2, LS3, and LS7 water pump:



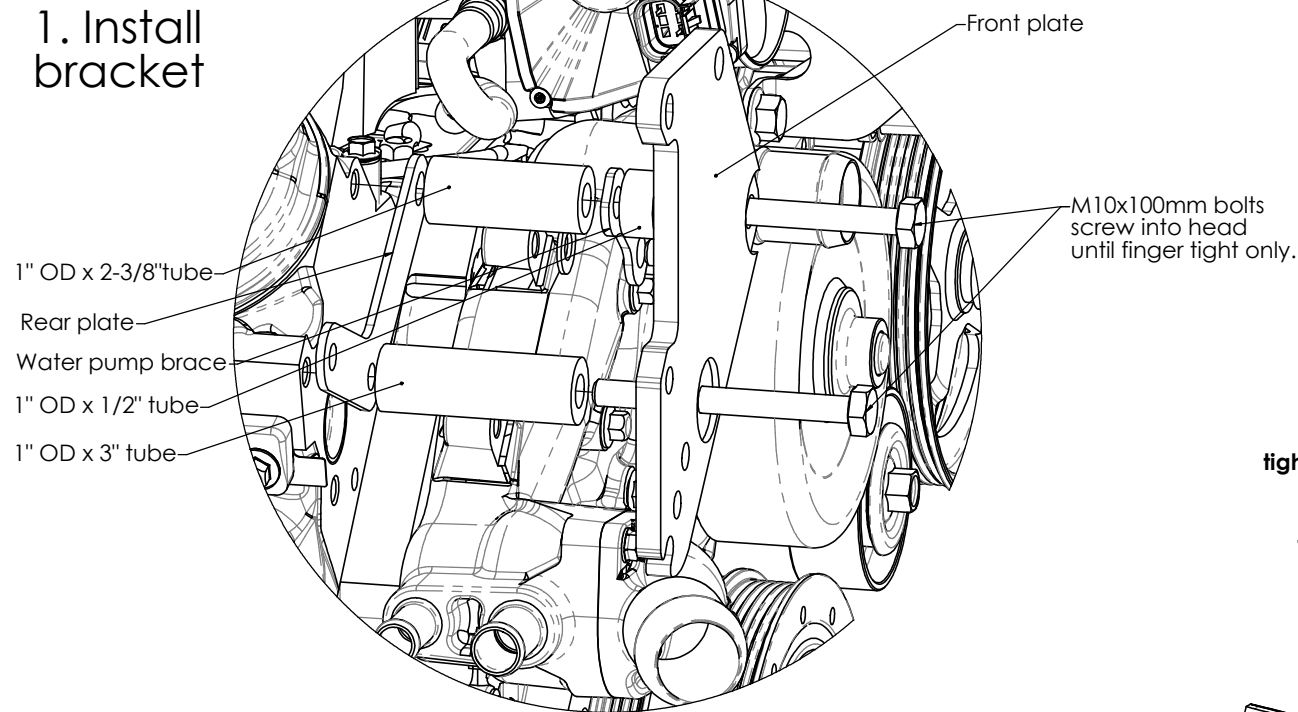
Belt installation

Note:
Install belt in rear 6 grooves
of 7 groove compressor.

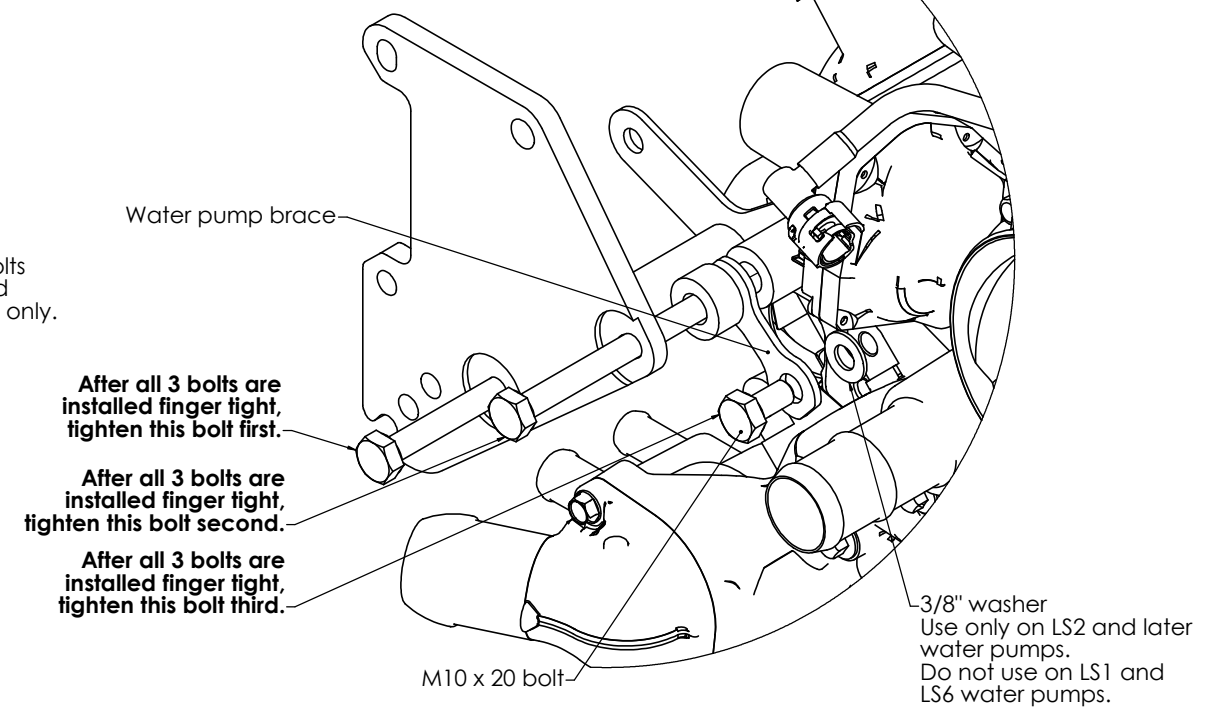


Installation Instructions for K10470 A/C Bracket for LS engines with Corvette balancer

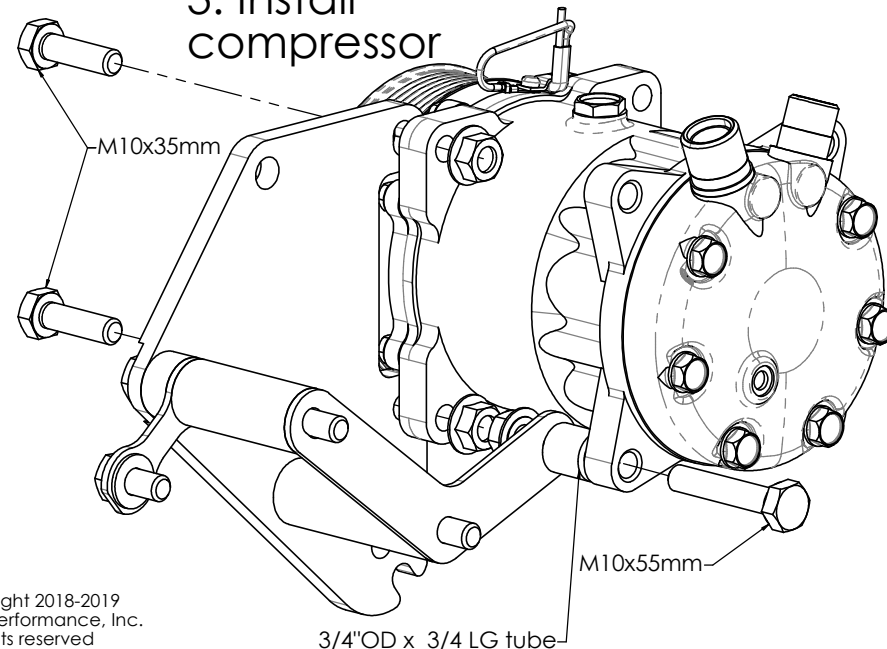
1. Install bracket



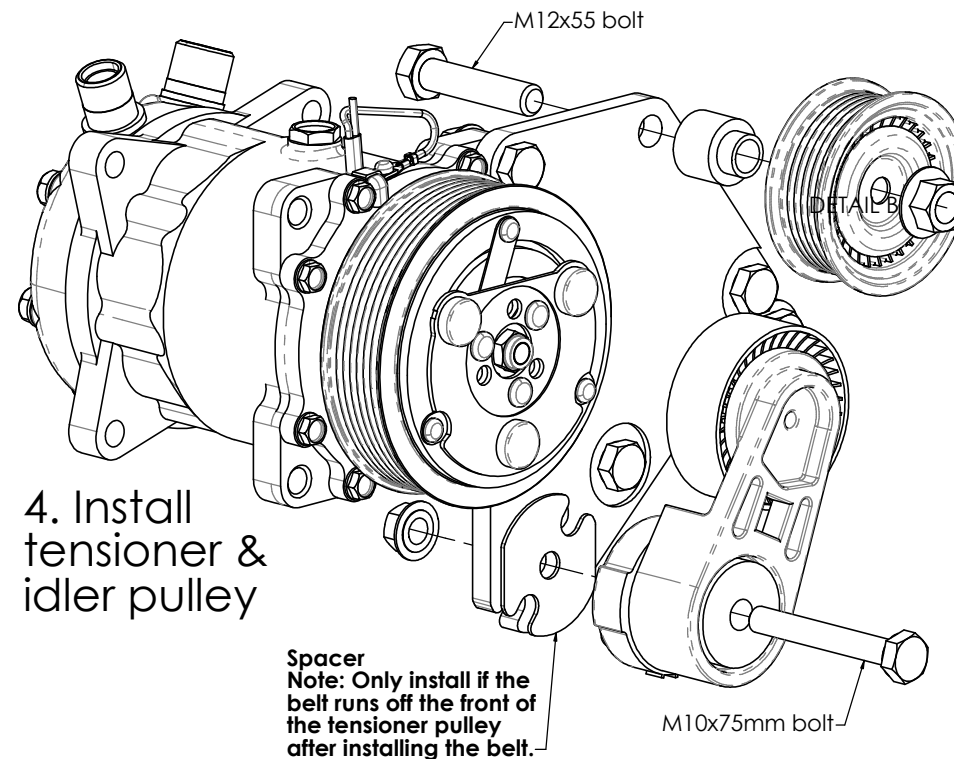
2. Install Water Pump Bolt



3. Install compressor



4. Install tensioner & idler pulley



5. Bolt torque

Tighten 10mm fasteners
to 37 ft-lbs (50 N-m),
Tighten 12mm fasteners to
50 ft-lbs (68 N-m).