



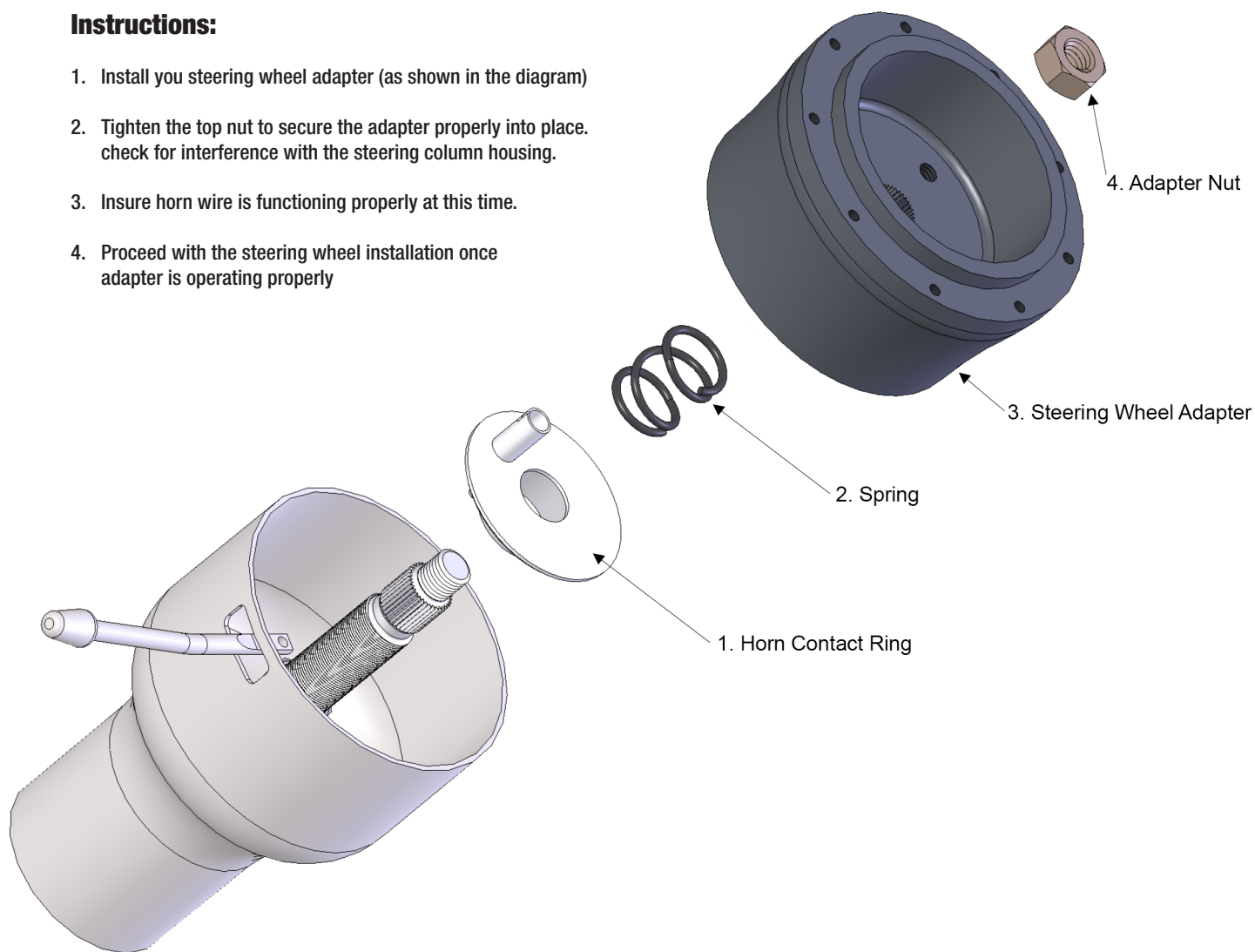
Steering, Brake & Suspension Specialists

Steering Column Adapter Installation Instructions

With so many different steering wheel adapters on the market there are some minor differences and in some cases, if the steering wheel adapter feels loose or too tight it might be necessary to install the horn contact nut (3a) instead of the horn contact spacer.

Instructions:

1. Install you steering wheel adapter (as shown in the diagram)
2. Tighten the top nut to secure the adapter properly into place. check for interference with the steering column housing.
3. Insure horn wire is functioning properly at this time.
4. Proceed with the steering wheel installation once adapter is operating properly



Installation and Adjustment of Park Safety Switch

Note:

For this switch to work correctly, the shift linkage must be properly adjusted to the detents in the transmission.

Instructions:

1. Remove park safety switch from column by removing the two retaining screws.
2. While holding the back of the neutral position in the switch. Place a pin (straightened paper clip) in the hole to retain this position. (See Figure A)
3. Place the gearshift indicator in the neutral position.
4. Place the park safety switch onto the column and attach the switch with the screws that were removed in Step 1. Snug the screws against the housing.
5. Reattach the wiring ensuring that the neutral safety wires are on the two flat terminals and the reverse lights are the two offset terminals. (See Figure B)
6. Move the gear shifter through the range of gears. The engine should only start in park.

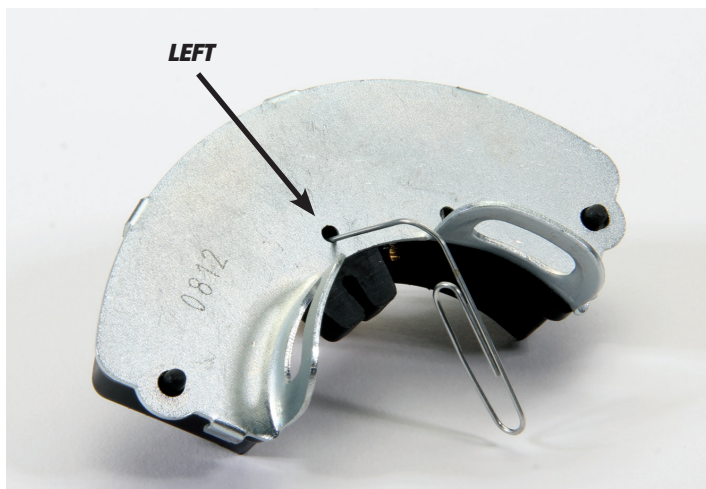


FIGURE A



FIGURE B