



Steering, Brake & Suspension Specialists

#CP681U - Sway Bar Installation Instructions

1" Rear Sway Bar for 1970-81 Camaro

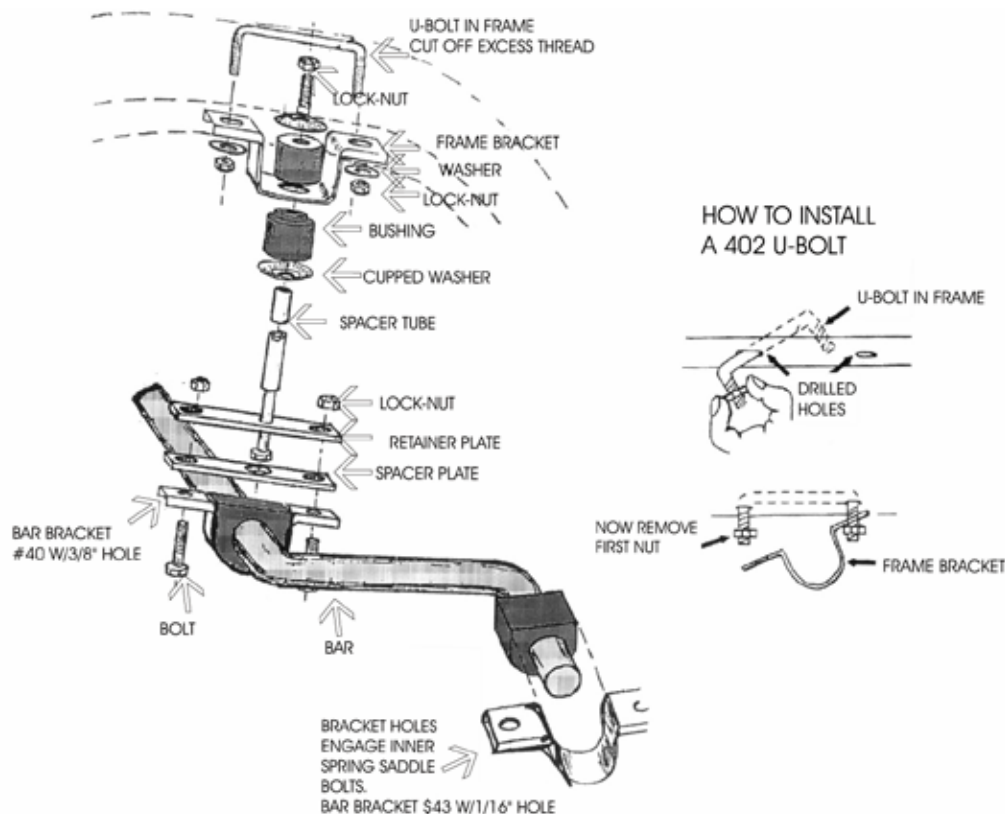
Hardware:

4 RH 509 Bushings	2 RH 043 Brackets
2 RH 040 Brackets	2 RH 041 Brackets
2 RH 034 Plates	2 RH 034B Plates
2 RH 402 U-bolts	2 RH 068 Tubes
2 RH 208 Bolts	4 RH 214 Bolts
8 RH 104 Washers	10 RH 304 Lock-nuts
4 RH 109 Washers	4 UB 609 Bushings
1 RH 904 Grease	1 BK 100 Handling Book

NOTE: If your car came with a factory rear anti-sway bar, the new bar can be mounted using the factory hangers if desired, and most of the installation steps can be eliminated. The new bar should be installed using the new bushings and brackets provided. If your car did not come with a factory bar, follow all of the steps below.

Instructions:

1. Using the frame brackets as a template, align the forward hole of the bracket with the forward of the two existing holes in the frame bottom above the rear of the axle. Mark the frame through the bracket's rear hole. Drill the frame with a 3/8" drill bit. For your safety always use caution and wear eye protection when drilling.
2. Assemble the hanger bolts as shown and tighten the lock-nut until the bushings are mildly compressed. Cut off any excess threads. Place two D-bushings on the bar as shown.
3. Start a nut on one leg of the U-bolt and insert the other leg through one hole in the frame. Maneuver the U-bolt until the other leg drops out the other hole. Remove the nut and install the hanger assembly onto it. Secure the hangers with the lock-nuts provided. Tighten to 10 lb/ft.
4. Support the rear axle under the spring plates. Remove the bottom inner nuts from the bolts that connect the spring to the spring plate. Place a D-bushing on each end of the bar and raise the ends of the bar to meet the spring plate. Using the bar brackets with the 7/16" holes, engage the brackets with the bolts on the spring plates to secure the ends of the bar. Replace the nuts and tighten to 35 lbs./ft.
5. Check all fasteners for suitable tightness. Have someone bounce the rear end of the car and check that all parts have clearance throughout the suspension travel. Road test your car to familiarize yourself with its new handling. As we cannot supervise your installation or driving, we cannot be held responsible for more than the cost of the kit. For best balance, control and stability, this kit should be used in conjunction with our front kits.



For technical help call Classic Performance Products Monday thru Friday 8:30am to 5:00pm at (714) 522-2000.

Classic Performance Products, Inc. 714.522.2000 | fax 714.522.2500

378 E. Orangethorpe Ave. | Placentia, CA 92870 | www.classicperform.com